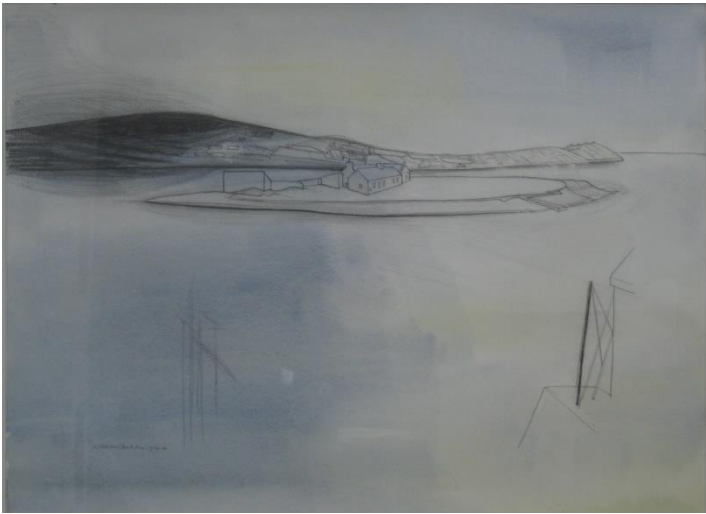


Gifts of original Barns-Graham works from the WBGT 2010-18

2010 Pier Arts Centre

BGT 653 - From Pier Arts Centre Stromness (Blue) 1984-86



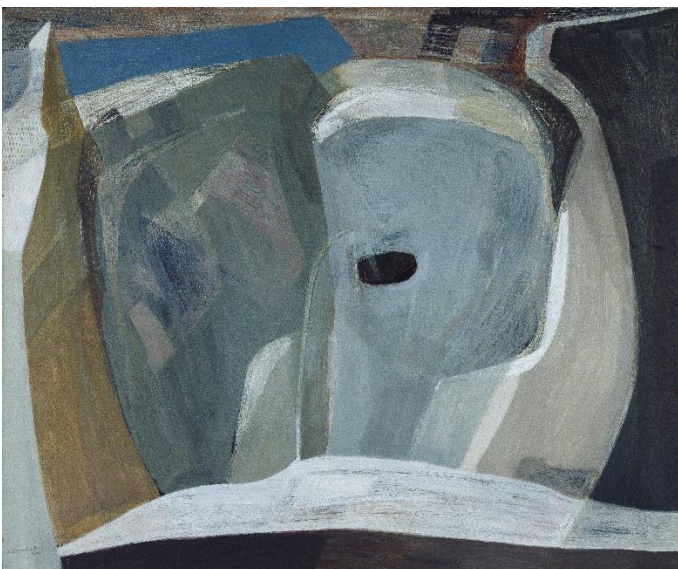
2012 Royal Collection Trust

BGT1120 - St Ives 1941



2012 Scottish National Gallery of Modern Art

BGT6217 - Glacier Chasm 1949



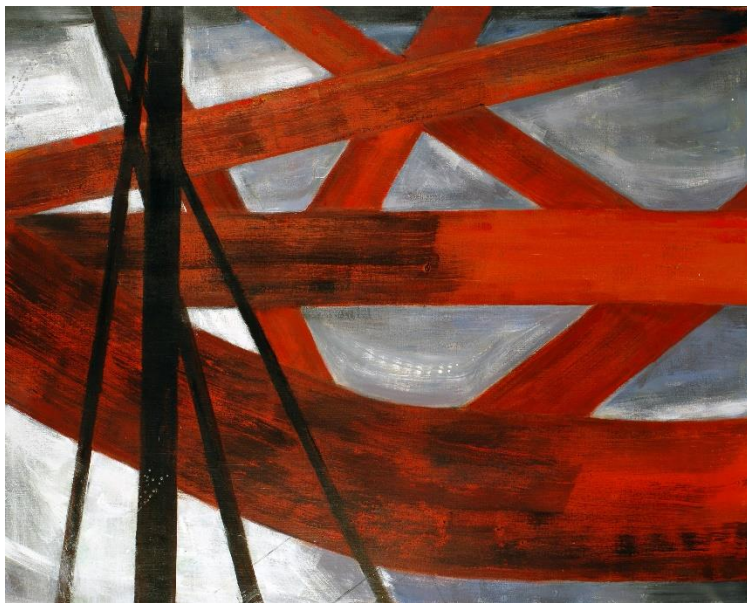
2012 Fleming Collection London
BGT3281 - **The Blue Studio** c.1947-48



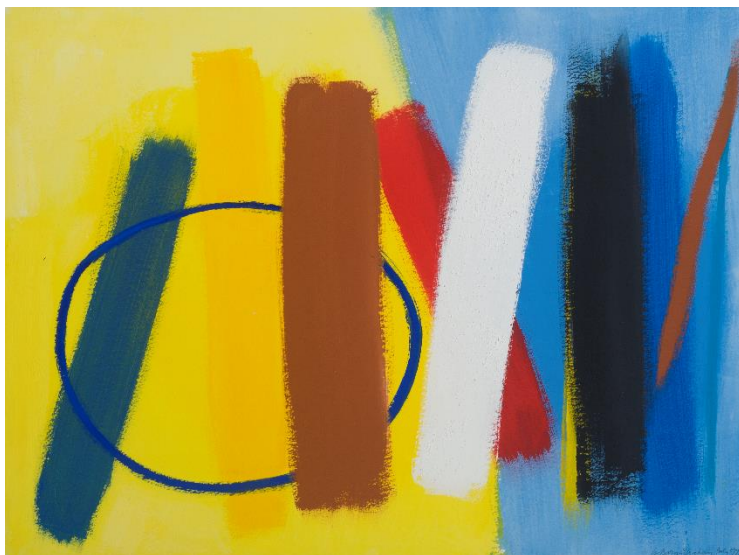
2013 Pier Arts Centre, Stromness
BGT564 - **Wreck, Warbeth** 1986



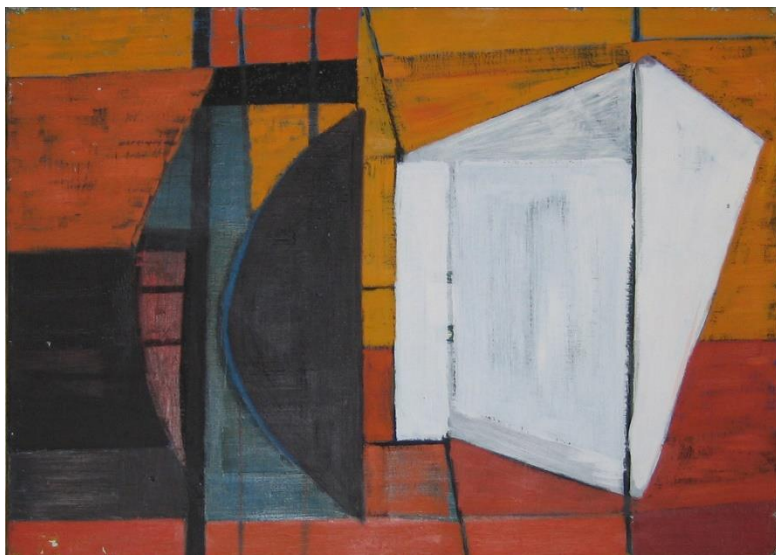
2013 City Art Centre, Edinburgh
BGT465 - **Firth of Forth Series** 1996-97



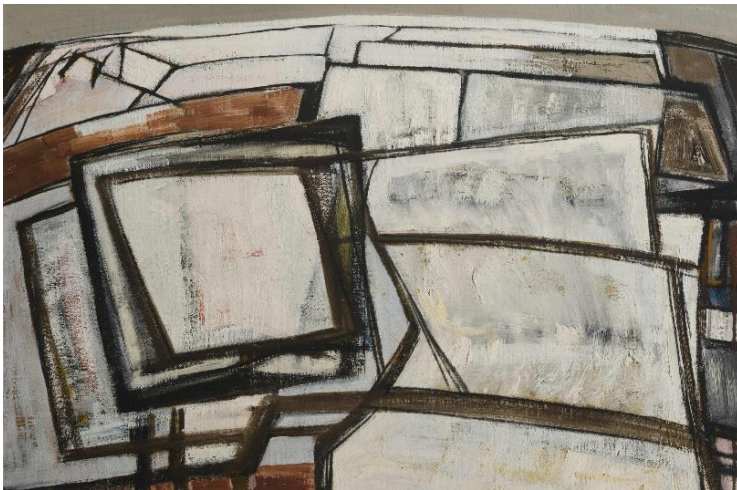
2013 Royal Scottish Academy of Art and Architecture, Edinburgh
BGT3180 - **Porthmeor, July** 1998



2015 Abbot Hall, Kendal
BGT570 - **[Geoff & Scruffy Series]** 1956



2015 Pallant House Gallery, Chichester
BGT572 - Snow at Wharfdale II 1957



BGT389 - Expanding Forms (Entrance) Touch Point Series No.1 1980



2017 Royal West of England Academy, Bristol
BGT958 - Easter Series No.3 2001



2017 Aberdeen Art Gallery

BGT1052 - **Untitled [Strung Forms Series]** c.1958-59



2017 Lillie Art Gallery, Milngavie

BGT1325 – **Untitled** c.1968



2018 Tate

BGT6455 - **White, Black and Yellow (Composition February)** 1957



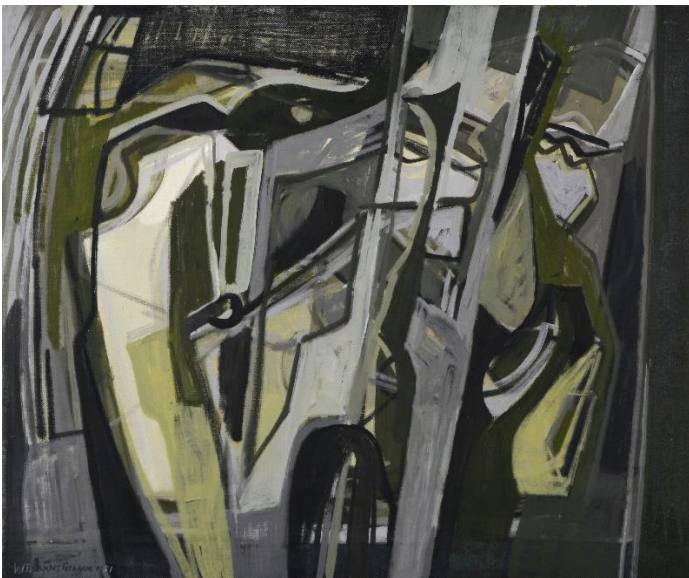
BGT339 - **Rock Theme St Just** 1953



2018 Hepworth Wakefield
BGT529 – **Glacier** 1977



BGT578 - **Green Skull Form I** 1951



2019 Stanley & Audrey Burton Gallery, Leeds University
BGT358 – **Untitled** c.1957



2020 Leeds Art Gallery
BGT473 – **Progression** 1965



2021 Sainsbury Centre for Visual Arts

BGT1307 – **Olive Green Squares on Vermillion** 1968

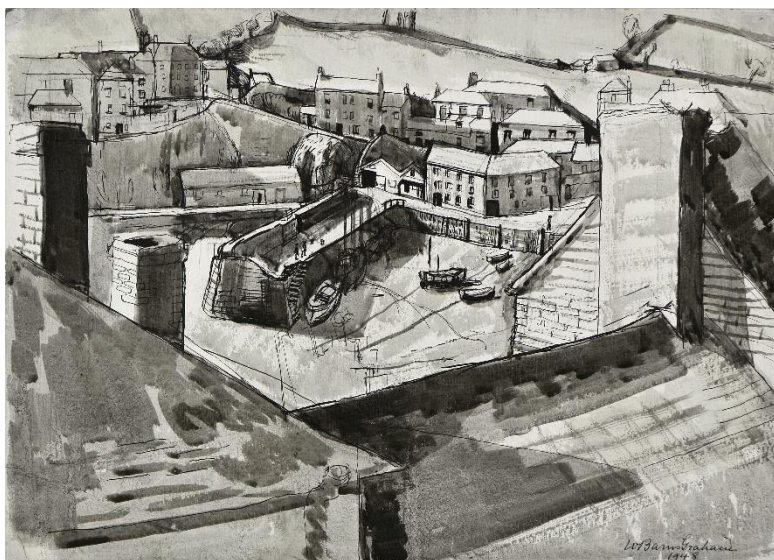


2022 British Museum

BGT6214 – **Malakoff, St Ives** 1949



BGT1395 – **Mevagissey** 1948



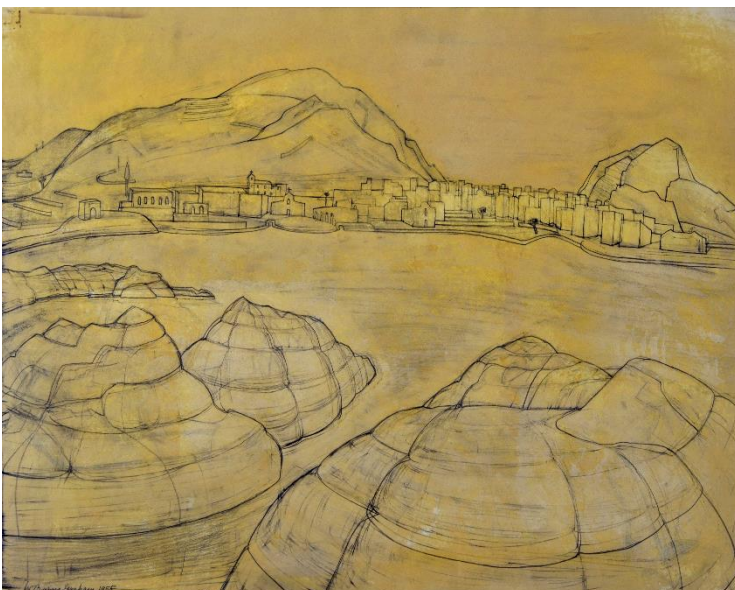
BGT7072 – Study for Large Shelf I 1951



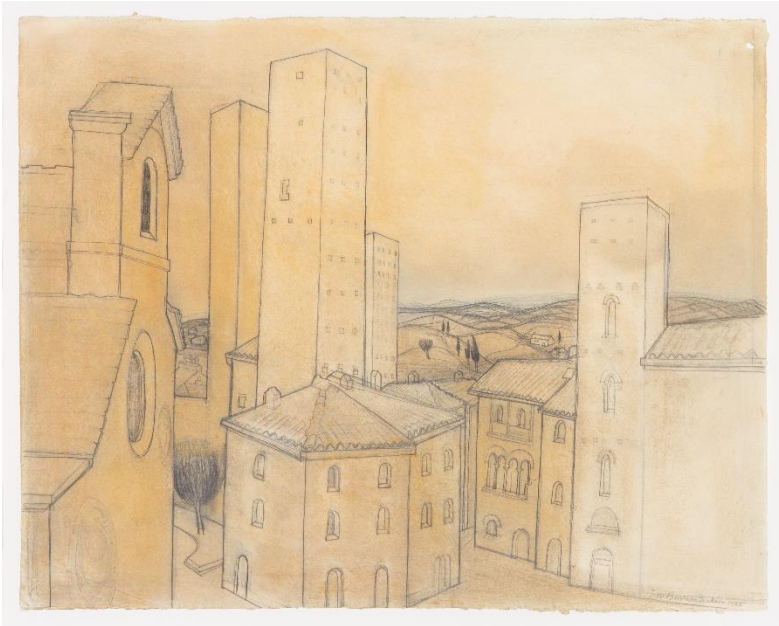
BGT752 – Clay Workings Chiusure 1954



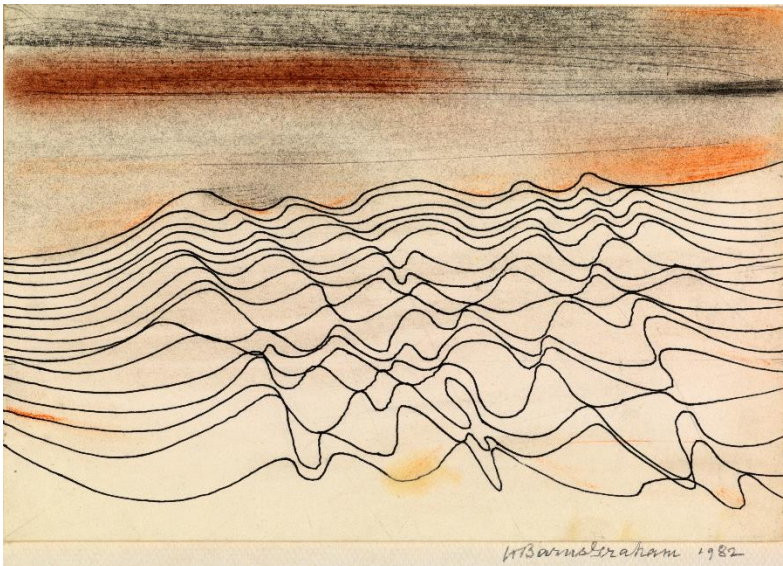
BGT1682 – Porticello (Cape Zafferano & Rocks Sicily) 1955



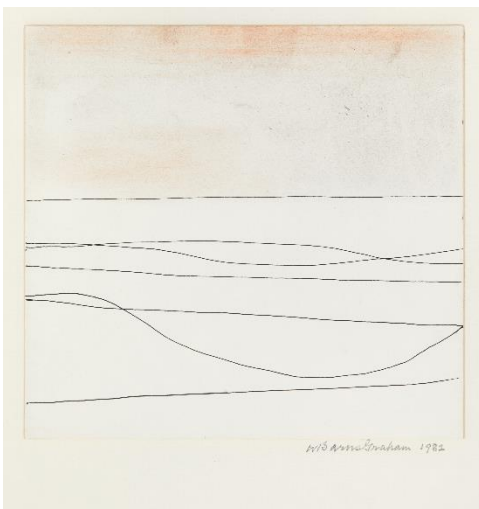
BGT2302 – **San Gimignano** 1955



BGT166 – **Seventeen Lines** 1982



BGT789 – **Seven Lines No.2** 1982



BGT1098 – Lava Forms Lanzarote 2 1993



BGT718 – Lava Muerte, Lanzarote 1992



BGT584 – Lime and Flame 1958



BGT2921 – **Untitled** 2000

