

KNIT YOUR OWN WILHELMINA BARNES-GRAHAM TIE



© Wilhelmina Barnes-Graham Trust

PATTERN NOTES

Wilhelmina Barns-Graham (1912-2004) designed and knitted over 50 unique woolen ties during the mid-1980s, many of which are held by the Wilhelmina Barns-Graham Trust. Jeni Allison has created this pattern using the drawing and measurements of Number 30, created by Willie in 1986.

We would love to see your creations. Please share your makes with us using the hashtag **#KnitBarnsGraham**.

MATERIALS & INFO

Skill level: Beginner / Intermediate

Finished Measurements: 10cm wide x 120cm long
4inches wide x 53.5 inches long

Needles: 3.25 mm, US 3

Gauge : 32 sts and 30 rows to 10cm measured over st st using 3.25mm (US 3) needles

Yarn: Jamieson's Spindrift

- A: Steel x 1
- B: Daffodil x 1
- C: Shetland Black x 1
- D: Coral x 1
- E: Spice x 1

PATTERN INSTRUCTIONS

STRIPE SEQUENCE

Rows 1- 24 : Using Yarn A
Rows 25 - 42 : Using Yarn B
Rows: 43 - 48: Using Yarn A
Rows 49-52 : Using Yarn C
Row 53 - 76: Using Yarns D and E (see chart 1)
Rows 76 - 102: Using Yarn A
Rows 103 - 106: Using Yarn C
Rows 107 - 114: Using Yarn A
Rows 115 - 120: Using Yarn B
Rows: 121 - 250 : See Chart 2 (130 rows)
Rows 251 - 258: Using Yarn D
Rows 259 - 270: Using Yarn E
Rows 271-272: Using Yarn A
Rows 263- 302: Using Yarn E
Rows 303 - 324: Using Yarn B
Rows 325 - 342: Using Yarns B and C, see Chart 3
Rows 343 - 344: Using Yarn A
Rows 345 - 350: Using Yarn B
Rows 351 - 368: Using Yarn D
Rows 369 - 390: Using Yarn A

TIE

Using 3.25mm (US 3) needles cast on 64 sts.
Beg with stripe sequence row 1 (see above), joining in and breaking off colours as required, and paying attention to intarsia charts where indicated,, cont as folls:

Row 1: Knit
Row 2: Purl
These two rows form stockinette stitch (st st)

Keeping stripe sequence correct continue in st st throughout.
No shaping up to and including row 52

Decrease:

Rows 53 - 120 starting with a knit row decrease 1 stitch at each end every 4th row until row 119
Row 120: Purl

Neck:

Continue in st st from chart 2 until row 250

Increase:

Continue in st st ,returning to stripe sequence from row 251 increase 1 stitch at each end every 4th row until row 310

Straight:

Continue in st st , following stripe sequence until row 390
Cast off

Making up:

Hand wash gently in warm water and give the tie a light press. With RS facing follow colour sequence to complete a invisible seam up the centre back. Close both ends.
Final light press.

ABBREVIATIONS

St st - Stockinette stitch

CHARTS

CHART 1

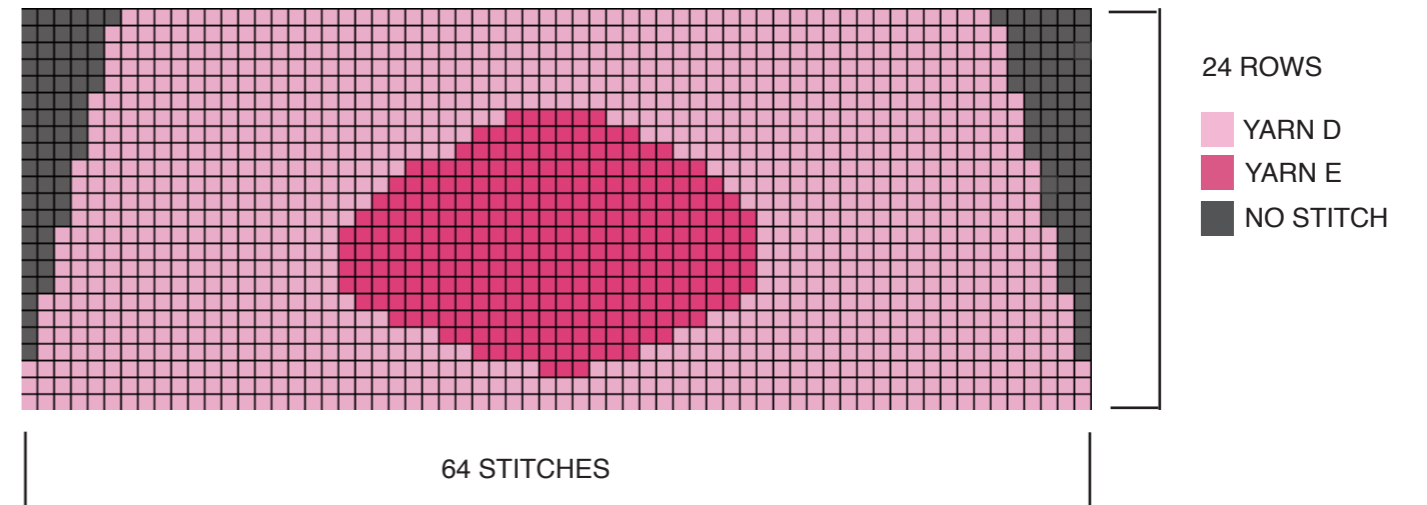


CHART 3

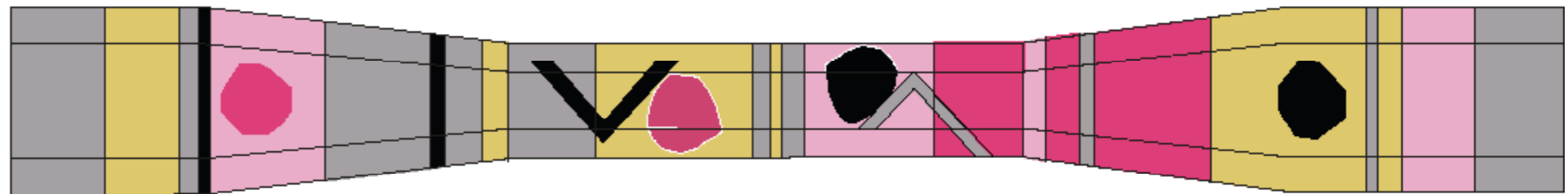
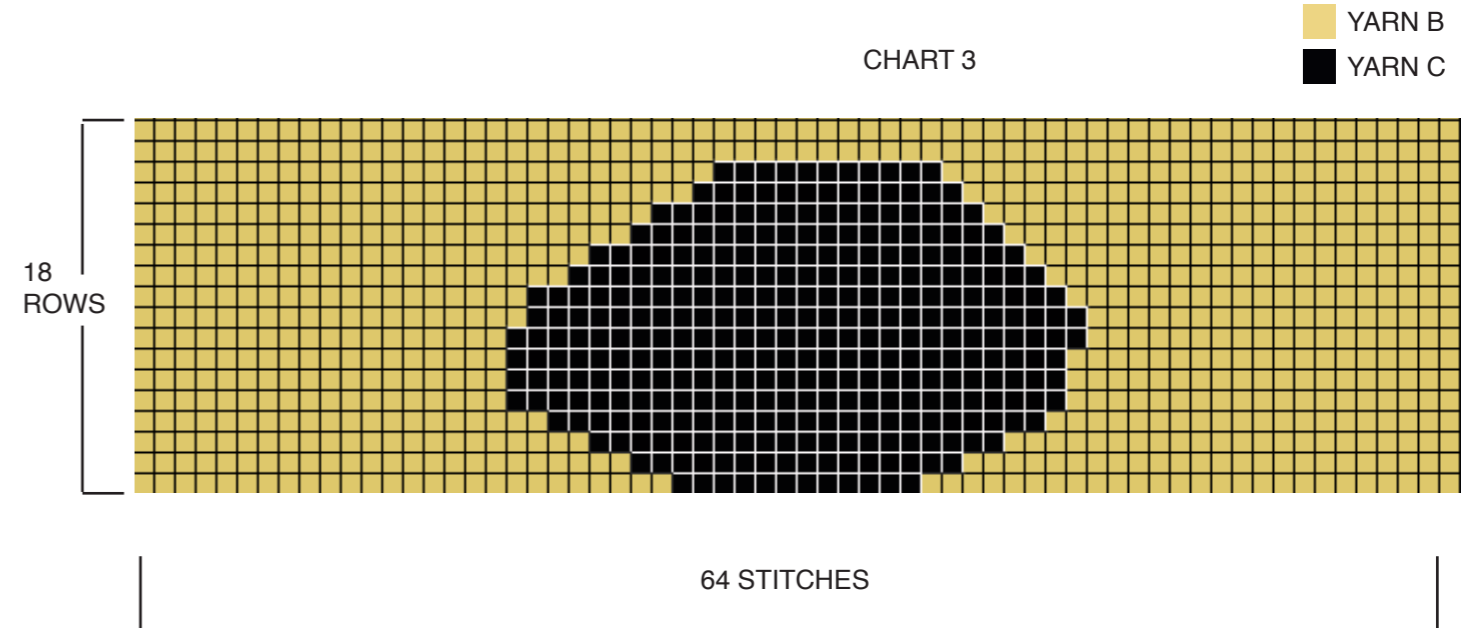
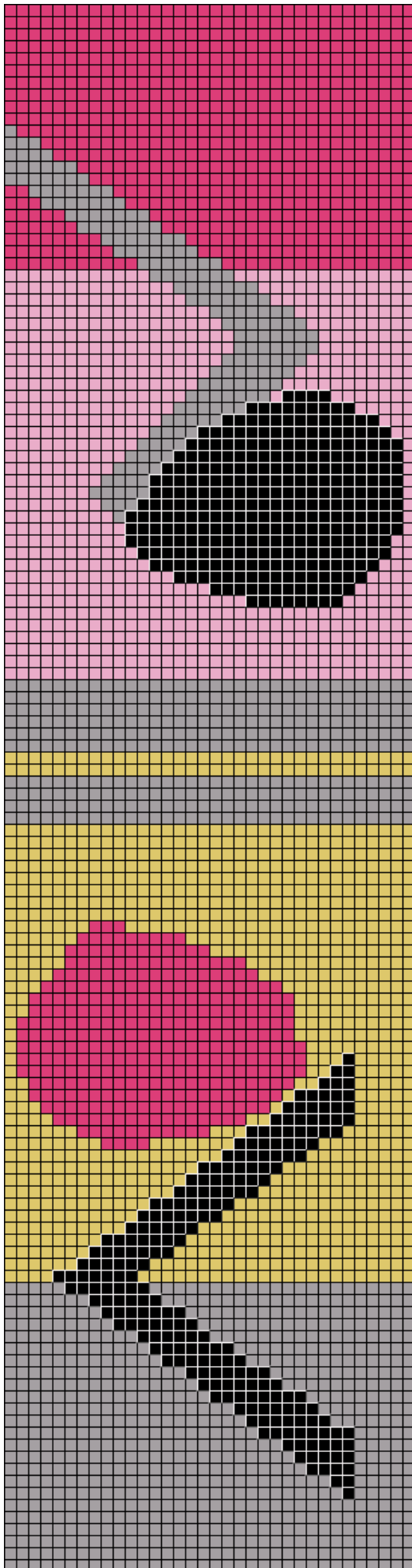


CHART 2



130 ROWS

34 STITCHES

- YARN A
- YARN B
- YARN C
- YARN D
- YARN E

Wilhelmina Barns Graham and the Wilhelmina Barns-Graham Trust

Wilhelmina Barns-Graham (1912-2004) was a leading member of the St Ives School of artists who contributed to the advancement of British Abstract Art in the 20th Century. Born in St Andrews in 1912, Barns-Graham studied at Edinburgh College of Art during the 1930s before moving to St Ives in 1940. As an important member of the St Ives Group, she was a key figure in the development of post-war British Modernist painting, alongside Ben Nicholson, Patrick Heron, Peter Lanyon and Terry Frost. Barns-Graham's professional career spanned over 60 years. During this time, she proved herself to be an artist of great variety and energy, constantly experimenting with different media, styles and themes.

The Wilhelmina Barns-Graham Trust exists to enhance the reputation and understanding of Wilhelmina Barns-Graham as one of Britain's most significant 20th -century artists and through her legacy support young people and other individuals to fulfil their potential in the visual arts. The Trust was established by the artist Wilhelmina Barns-Graham in 1987. Upon her death in 2004, Barns-Graham left her estate to the Trust. This organisation exists to safeguard the artist's archive of work and promote her legacy, in addition to supporting art and art history students, contemporary artists and researchers. The Trust cares for the contents of the artist's two studios as well as works from her private collection. The collection consists of paintings, drawings, sketches, prints, sculpture, ceramics, books, periodicals and photographs.

Information about the Trust and its activities can be found at www.barns-grahamtrust.org.uk.



@BarnsGraham 

@WBGTrust1 

@BarnsGrahamTrust 

#KnitBarnsGraham

The Wilhelmina Barns-Graham Trust would like to thank Jeni Allison for creating this knitted tie pattern. Please take a look at Jeni's other work at www.jeniallison.co.uk or @jeniallison on instagram.